



Chappell Newsletter

Chappell Elementary School
 205 N. Fisk St.
 Green Bay, WI 54303
 Phone: 920-492-2630
 Fax: 920-492-5566



Web: <http://www.chappell.gbaps.org/>
 Facebook: <https://www.facebook.com/ChappellElementary>

December 2023

Monday	Tuesday	Wednesday	Thursday	Friday
				1 Jersey/Sports Team Day
4	5	6	7	8 -Early Release Day 12:35 pm -Flannel Friday
11	12	13	14 WINTER CONCERT	15
18	19 Percy the Penguin See page 2	20	21	22 Pajama Day
25 WINTER BREAK	26 WINTER BREAK	27 WINTER BREAK	28 WINTER BREAK	29 WINTER BREAK

December 8th
 Early Release Day
 12:35 pm

Winter Break
December 25-29

Classes will resume on Tuesday, January 2nd

Chappell Dress Up Days

We've made some changes to the dress up days. The dates in red have changed.

Dec 1-	Jersey or sports team day
Dec 8-	Flannel Friday
Dec 22-	Pajama day
Jan 11-	Tourist/beach day
Jan 26-	Comfy Day
Feb 9-	Formal Day
Feb 15-	100th day of school dress up day
Mar 8-	My Many Colored Days
Mar 22-	Dress as your favorite character
Apr 19-	80s dress up day
May 2-	Kentucky Derby Day

WINTER CONCERT
 December 14th

- 9:15am- 4th & 5th grade and Show Choir
- 10:45am- 4KAM
- 12:45pm- 4KPM
- 1:30pm- Kg & 1st grade
- 2:30pm- 2nd & 3rd and Show Choir

*Please use the front office doors (door #1) to enter the building.
 *All grade levels will perform at different times this year.(See times above)
 *Please keep in mind the schedule above was created to safely accommodate students, staff and visitors in our gymnasium
 *Parking on Fisk Street will be permitted by the City of Green Bay on this day.

NOTICE

We have received numerous complaints regarding cars stopping in the middle of the road to drop off students. This poses a significant risk to student safety and causes unnecessary traffic congestion. We kindly request that you utilize the available parking spots on the street or at the church parking lot across the street to drop off students. Additionally, please be aware that our neighboring Church serves meals on Tuesday and Thursday. Their services do not start until after school is over however people tend to line up much earlier than that which causes additional traffic on those days.

The Percy Project at Chappell

DECEMBER 19 @ 2:30 PM for students

4:00 PM & 5:00 PM for families

Join us for a live 30-minute stage adaptation with additional music, dialogue, and interactive moments with the audience, premiering at Chappell School.

The Percy Project focuses on supporting school communities by providing immersive, art-integrated educational experiences. The project aims to counter the issue of arts education budget cuts, offering students a rich and engaging involvement in the arts.

A Special Thanks to our Volunteers

We are greatly appreciative of the dedication and efforts of several of our volunteers

- Popcorn Friday Volunteers pop and deliver fresh popcorn to classrooms every Friday.
- Miss. Metoxen and our PTO have been instrumental in sorting and assembling Serogy's orders.
- Senor and Senora Tennie generously volunteer their time to assist our students in reading and math.



We also wanted to thank **YOU**, our wonderful parents, guardians and community for contributing to our Penny Wars fundraiser. With your contributions, we will be acquiring Osmo - Genius Tangrams for classrooms.



Outdoor Recess Reminder

Please send your child to school with appropriate winter clothing to ensure they stay warm at recess. Students will continue to go outside for recess unless the temperature is below 0 degrees (including windchill).





festival

OF LIGHTS

SATURDAY, DECEMBER 2, 2023 • 5-7 PM
LAMBEAU FIELD ATRIUM • FREE ADMISSION

- HOLIDAY PHOTO OPPORTUNITIES
- COOKIE WORKSHOP (5-6:30 PM)
- TREE LIGHTING (PROGRAM BEGINS AT 6:30 PM)

- LOCAL CHOIRS
- FACE PAINTING
- BUILD-YOUR-OWN HOT CHOCOLATE BAR
- CARD-MAKING WORKSHOP

JOIN US FOR A FUN-FILLED NIGHT!
 BROUGHT TO YOU BY
festival 

Deliver a message of hope to a local, less fortunate child this holiday season! Donate a new, unwrapped toy to this event. **TOYS FOR TOTS**

This organization, program or activity is not affiliated with the Green Bay Area Public School District nor is it a school-sponsored activity. The District does not approve, support or endorse the information contained within this document or this program or activity. For more information, please visit: packers.com/fans/festival-of-lights. For questions, please call: (920) 569-7237.

Esta organización, programa o actividad no está asociada con el Distrito de Escuelas Públicas del Área de Green Bay, ni tampoco es una actividad patrocinada por la escuela. El Distrito no aprueba, apoya, ni respalda la información contenida dentro de este documento o este programa o actividad.

Winter Attendance

Tips and reasons for coming to school all winter long

- If you're having trouble getting to school, we want to help! Please call the school
- This is the time of year when winter weather and children's illnesses can take a toll on school attendance. But it's important to get your children to school every day possible. If you're unsure if your student can attend school based on symptoms, call and ask
- Too many absences can make it hard for students to stay engaged, connected and learning. This is as true in kindergarten and elementary grades as it is in high school.
- Children who miss too much school in kindergarten are less likely to read well by third grade.
- There's not much we can do about the weather, but there are steps caregivers can take to help avoid absences.
- Do what you can to keep your children healthy
- Schedule a yearly physical for each child

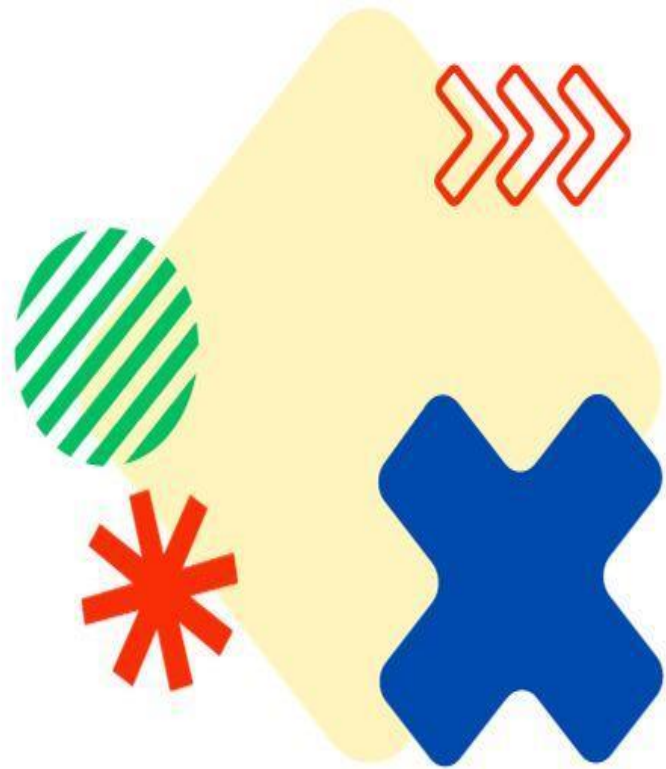
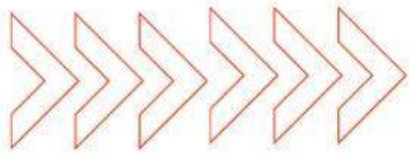


Help your children learn to persevere. Today, they learn to overcome wintry weather. In the future, they will have the confidence to triumph over other obstacles to reach their dreams.



R.E.A.L.

IMPORTANCE OF ATTENDANCE



ROUTINES

Getting a good night sleep, organizing clothes/school supplies at night, packing your lunch the night before

ENGAGEMENT

Free time at recess and lunch with friends, clubs, show choir, special activities

ACCESS

Learning new material, having breakfast and lunch, making friends, attending field trips, building relationships with teachers and student services, meeting with the school nurse

LEARNING

The more you're at school, the more you'll learn and make friends. The more you learn and make friends, the easier it will be for you to succeed as you grow!



Chappell Elementary School

Kristen Worden, Principal

205 North Fisk Street | Green Bay, WI 54303

Phone: (920) 492-2630 | www.gbaps.org

Dear Families:

With the winter season quickly approaching, I wanted to share some important reminders about school closings and delays.

Notifications:

- In order to ensure families are notified of a school closing or delay, the District will send out emails, automated phone calls and text messages to parents/guardians using our School Messenger notification system. If you have not "opted-in" to receive text messages, text "opt-in" or "subscribe" to 67587, if we have your cell phone number on record in Infinite Campus.
- The District will also notify the media, post the delay or closure on the District's/schools' websites, Facebook, Twitter, and on the District's mobile app. To download our mobile app, search Green Bay Schools <https://launch.customschoolapp.net/green-bay-sd/>.
- When schools close early due to inclement weather, the District will notify the media at least one hour before the first students are released. Parents are also encouraged to check the District's website, Facebook and Twitter accounts, as well as the GBAPS mobile app for up-to-date information.

Early Dismissal:

- When the District determines the early dismissal time, parents will receive a communication about the new dismissal time. Whenever possible the District will attempt to dismiss after lunch has been served.
- For early dismissal days due to inclement weather, it is important that families have a plan in place. Students will not be dismissed prior to the assigned time unless parents/guardians pick them up.

Finally, I want to remind families that parents/guardians can always determine if they would prefer their students remain home from school on inclement weather days, should the decision be made to not close schools. In addition, should you decide that you would prefer to pick your child up on an inclement weather day, if school will not be dismissed early, you may do that as well. In either case, please be sure to notify the school office.

If you have any questions, please do not hesitate to call me.

Sincerely,

Kristen Worden
Principal